

Pink® Partition

Application

This installation guide provides installation recommendations for Pink® Partition batts and rolls in commercial and multi-residential internal and external walls.

Important Notes

Pink® Partition insulation is supplied in batts, or in skip chopped blanket form or 2.4m batts.

- All insulation shall be installed in accordance with AS 3999.
- Refer to latest ICANZ installation handbook Part 2: Professional Installation Guide for further information and tips.
- Ensure that all safety assessments are carried out relevant to the project and all site safety requirements are strictly adhered to.
- Electric cables and equipment partially or completely covered with bulk thermal insulation may overheat and fail. Refer to AS3999:2015 – Section 2.6 for details.
- Where cutting is required, use a sharp knife and straight edge. Cutting insulation with power tools is not recommended.
- Pink® insulation products are not designed to withstand weathering; hence external cladding should be applied without delay. These insulation products are not suitable for applications where subject to wetting or excessive moisture.
- Prior to installation, calculate the amount of insulation and fixings required.
- Avoid gaps in the insulation, other than where required, around electrical fittings or as specified.
- Avoid compressing or over fixing insulation as this will reduce the thermal performance of the installed product.
- Avoid using multiple small offcuts to fill single areas and opt for larger single pieces, purpose-cut to fill larger gaps.

Insulation required

- Measure the square metre of area to be insulated.
- Check the centre to centre distance between studs in the wall frame.
- Refer to the project specification for the correct insulation. Pink® Partition batts are generally selected on density. To achieve a certain acoustic performance, consult the specifier about the correct product for the application.
- Coverage of each Pink® Partition pack or roll is provided on the relevant Technical Data Sheet.
- Divide the area to be insulated by the coverage per pack to determine the number of packs to order.
- Allow for wastage. As a general rule, allow for 5% wastage for simple areas and greater allowances for more complex areas.

Accessories

Generally Pink® Partition Batt's will stay in place when installed prior to wall sheeting being installed. Where Pink® Partition batts are to be left without any support for extended periods, stringing should be in place to hold the product in place.

Simple stringing such as PVC tape can be used. Any stringing selected should minimise the unevenness of contact of the plasterboard against the framing.



Tools



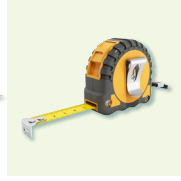
Sharp knife

For cutting insulation to size.



Cutting board

Or hard, durable surface.



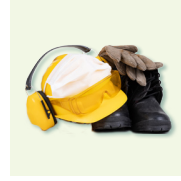
Tape measure

To measure lengths required.



Straight edge

For cutting.



Clothing & PPE

Appropriate wear for site (refer sections below).



Ladder

Or scaffolding as needed.

PPE

Personal Protective Equipment (PPE) must be compliant with the requirements of the specific worksite. Check with site foreman or site representative to ensure that required PPE obligations are met. As a recommendation for handling and installing insulation materials, the following PPE is recommended:



Eye protection

Suitable eye protection to AS 1336 reduces the risk of eye contact with dust or fibres. Safety glasses must be worn when installing from beneath the ceiling.



Gloves

Gloves are recommended, especially when cutting insulation.



Work clothes

Loose fitting clothes, including long sleeved shirts, long pants and cap or hard hat.



Dust mask

A dust mask is recommended when working in dusty areas.



Safety shoes

Safety boots/shoes must be worn to protect feet.



Separate wash

Wash work clothes separately and rinse the washing machine after use.

Safety



Assess

Assess the building structure and site for any safety issues prior to commencing work.



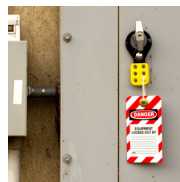
Check

Make note of the location of equipment in the soffit such as lighting luminaires and fire sprinklers.



Electrical wires

Ensure the work area is safe from hazards including electrical cabling. Do not touch any live electrical cables.



Isolate power

If accredited, isolate power at the circuit board where necessary and apply caution tags to circuit breakers.



Electrician

If not accredited, ask appropriate site representative to isolate power at the circuit board where necessary and apply caution tags to circuit breakers.

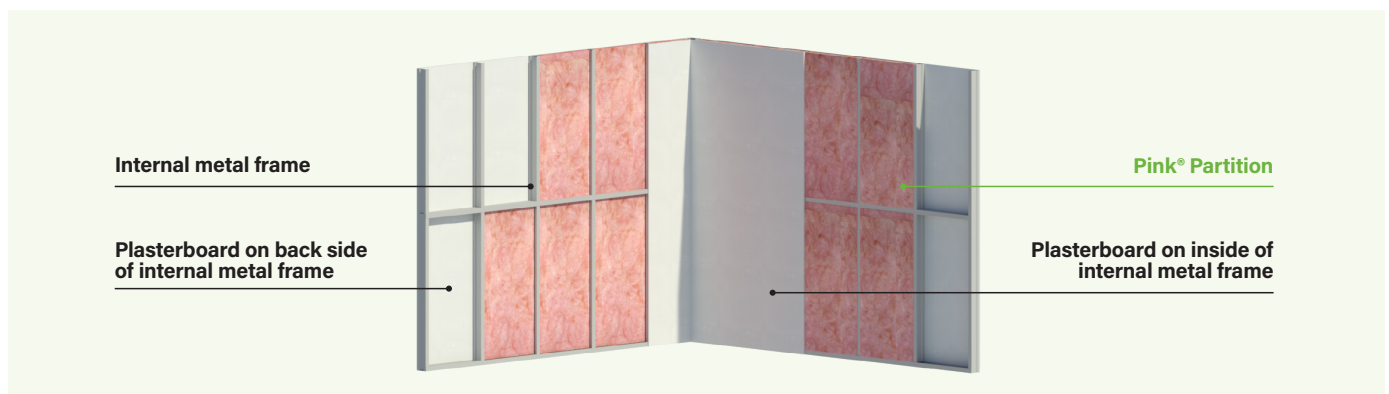


Height

To span two joists if needed to install insulation within roof spaces.

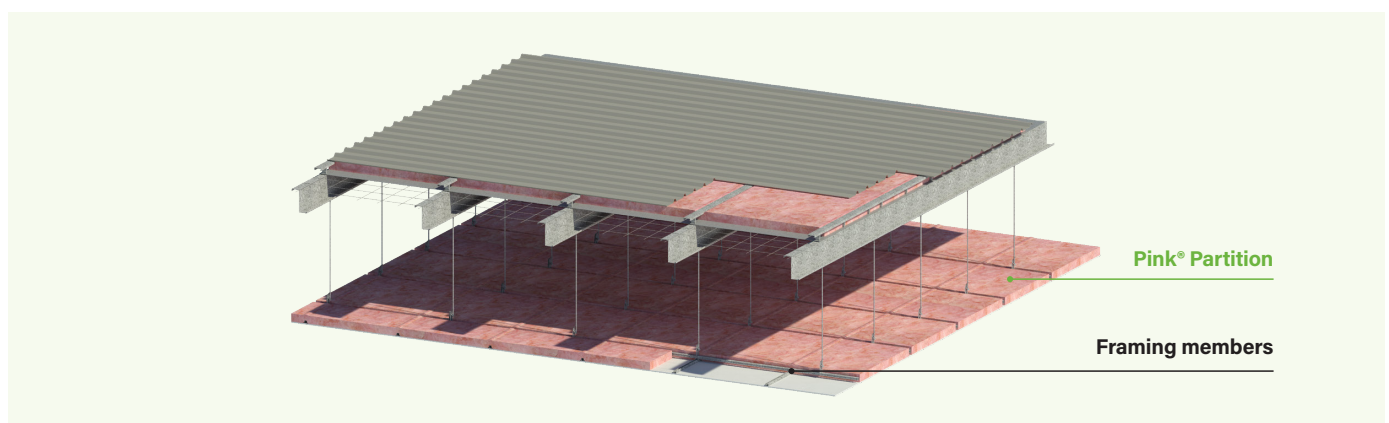
External facades and internal partition walls

- Friction-fit the insulation into the wall frames ensuring no gaps between the insulation and studs or noggings.
- In metal framing, the insulation shall be inserted into the open side of the channel.
- Ensure that the insulation does not protrude past the studs and fits snugly, including where insulation is around water pipes or other rigid obstructions in the wall.
- Butt the insulation edges closely together to ensure there are no gaps left at joints.
- Offcuts may be used to fill small spaces to ensure complete coverage. Use single offcuts rather than multiple small pieces to fill voids.



Ceiling overlay

- Friction-fit between framing members ensuring no gaps.
- Butt insulation edges close together.
- Ensure appropriate clearances are provided around any light fixtures or penetrations as required.



© Fletcher Insulation Pty Limited 2024. Fletcher Insulation reserves the right to change product specifications without prior notification. Information in this publication and otherwise supplied to users as to the subject product is based on our general experience and is given in good faith, but because of the many particular factors which are outside our knowledge and control and affect the use of products, no warranty is given or is to be implied with respect to either such information or the product itself, in particular the suitability of the product for any particular purpose. The purchaser should independently determine the suitability of the product for the intended application. The colour PINK, Pink® and Pink® Batts are registered trademarks of Owens Corning used under licence by Fletcher Insulation. FBS-1 Glasswool Bio-Soluble Insulation® is a registered trademark of ICANZ. Unless otherwise stated all ™ and ® are trademarks and registered trademarks of Fletcher Insulation Pty Limited ABN 72 001 175 355. IG12_Revision_1_Issue date 07082024.