

Pink® Floor batts

Application

This installation guide provides installation recommendations for Pink® Floor Batts in residential flooring applications for both new build and retrofit applications.

Important Notes

Pink® Batts: Floor are supplied in widths to meet standard floor joist spacings.

- All insulation shall be installed in accordance with AS 3999.
 - Refer to the latest ICANZ installation handbook Part 2: Professional Installation Guide for further information and tips.
 - Ensure that all safety assessments are carried out relevant to the project and all site safety requirements are strictly adhered to.
 - Electric cables and equipment partially or completely covered with bulk thermal insulation may overheat and fail. Refer to AS 3999–Section 2.6 for details.
 - Where cutting is required, use a sharp knife and straight edge. Cutting insulation with power tools is not recommended.
 - Pink® insulation products are not designed to withstand weathering; hence external cladding should be applied without delay.
 - These insulation products are not suitable for applications where subject to wetting or excessive moisture.
 - Prior to installation, calculate the amount of insulation and fixings required.
 - Avoid gaps in the insulation, other than where required, around electrical fittings or as specified as this will reduce the thermal performance of the installed product.
 - Avoid using multiple small offcuts to fill single areas and opt for larger single pieces, purpose-cut to fill larger gaps.
 - Check that there are no signs of seepage beneath bathroom/s floor/s (and other wet areas).
 - Organise to repair damaged plumbing or sewer work before beginning insulation project.
- Ensure the under floor area is dry with adequate ventilation. If wet, lay down a ground sheet or mat for comfort and protection.

Insulation required

- Measure the square metre of area to be insulated.
- Coverage of each Pink® Batts: Floor is provided on the relevant Technical Data Sheet.
- Divide the area to be insulated by the coverage per pack to determine the number of packs to order.
- Allow for wastage. As a general rule, allow for 5% wastage for simple areas and greater allowances for more complex areas.

Accessories

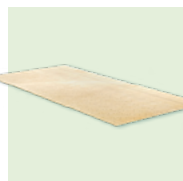
- Pink® Batts: Floor can be installed using polypropylene strapping, pvc tape or string.

Tools



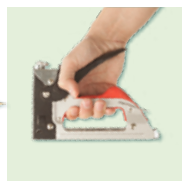
Sharp knife

With a plastic (non-conductive) handle for cutting insulation to size.



Cutting board

Or hard, durable surface.



Staple gun

With non-metallic staples to staple tape or string, if required.



Tape or string

If installing from underside of ceiling or if wall insulation is to be left for an extended period.



Batt poker

Of a non-conductive material such as wood or plastic, if installing from below and ceiling is not in easy reach.



Kneeling board

To span two joists if needed to install insulation within roof spaces.



Torch

For use in roof spaces.



Ladder

Or scaffolding as needed.



Tape measure

To measure lengths required.

PPE

Personal Protective Equipment (PPE) must be compliant with the requirements of the specific worksite and relevant Australian Standards. Check with site foreman or site representative to ensure that required PPE obligations are met. As a recommendation for handling and installing insulation materials, the following PPE is recommended:



Eye protection

Suitable eye protection to AS 1336 reduces the risk of eye contact with dust or fibres. Safety glasses must be worn when installing from beneath the floor.



Gloves

Gloves are recommended, especially when cutting insulation.



Work clothes

Loose fitting clothes, including long sleeved shirts, long pants and cap or hard hat.



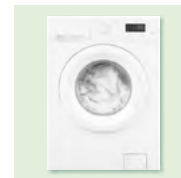
Dust mask

A dust mask is recommended when working in dusty areas.



Safety shoes

Safety boots/shoes must be worn to protect feet.



Separate wash

Wash work clothes separately and rinse the washing machine after use.

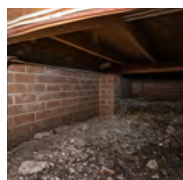
Safety

The following activities are recommended but not limited to these items. A full site-specific safety assessment must be completed to ensure installation is safe.



Assess

Assess the building structure and site for any safety issues prior to commencing work.



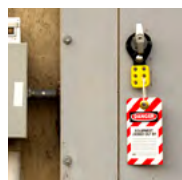
Check

Before entering a sub-floor space, be mindful of height restrictions and check for any obstacles, while familiarising yourself with the space.



Electrical wires

Ensure the work area is safe from hazards including electrical cabling. Do not touch any live electrical cables.



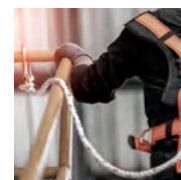
Isolate power

If accredited, isolate power at the circuit board where necessary and apply caution tags to circuit breakers.



Electrician

If not accredited, ask appropriate site representative to isolate power at the circuit board where necessary and apply caution tags to circuit breakers.



Height

Working at height can be dangerous, exercise caution when climbing ladders or accessing elevated platforms.



Stay hydrated

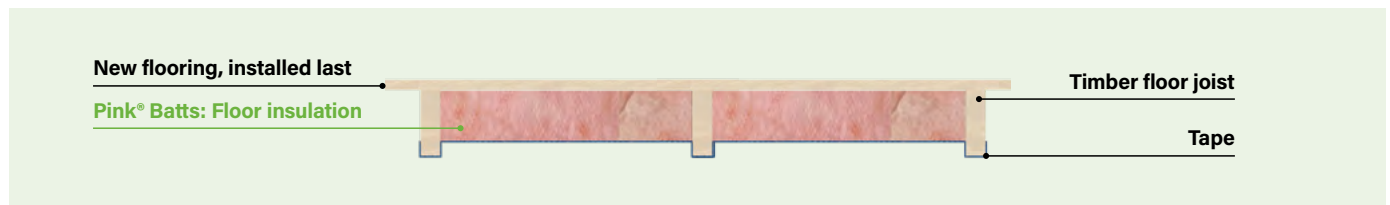
Stay hydrated and get relief and fresh air regularly.

New flooring

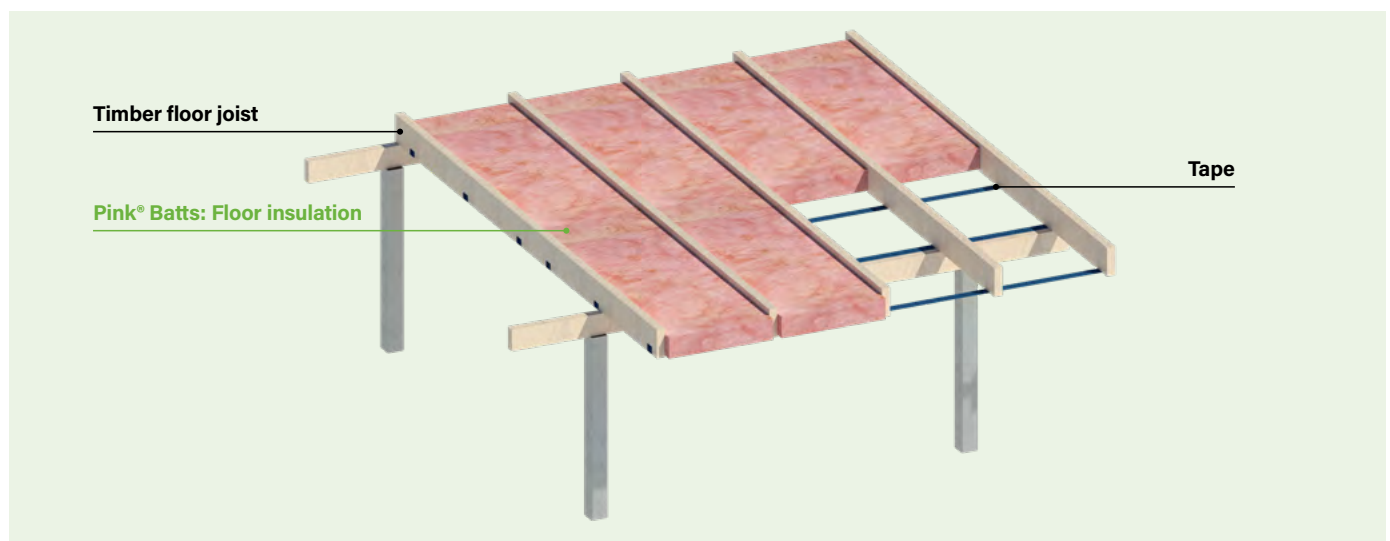
Fitting Pink® Floor Batts to floor joists before flooring is installed

- Tape or string should be secured at the side of joists, then run underneath the joist and secured to the bottom of the adjoining joists with staples or fasteners.
- Run tape/string at regular intervals (3–4 per batt) to keep batts securely in place.
- Place batt packs at even intervals on top of the floor joists.
- Lay batts between floor joists. The batts will friction-fit into the space using the tape or string to support the batts until flooring is complete.
- You must butt batts closely together ensuring there are no gaps.
- Continue to work until floor is fully insulated and extends no less than 50mm beyond the interior face external wall.
- If brickwork is single skin and exposed to water, maintain at least a 50mm gap from brickwork to prevent capillary action.
- Offcuts may be used to fill small spaces to ensure complete coverage. Use single offcuts rather than multiple small pieces to fill voids.
- Cut batts to fill gaps or fit around any pipe work.

New flooring, cross section



New flooring, view from above



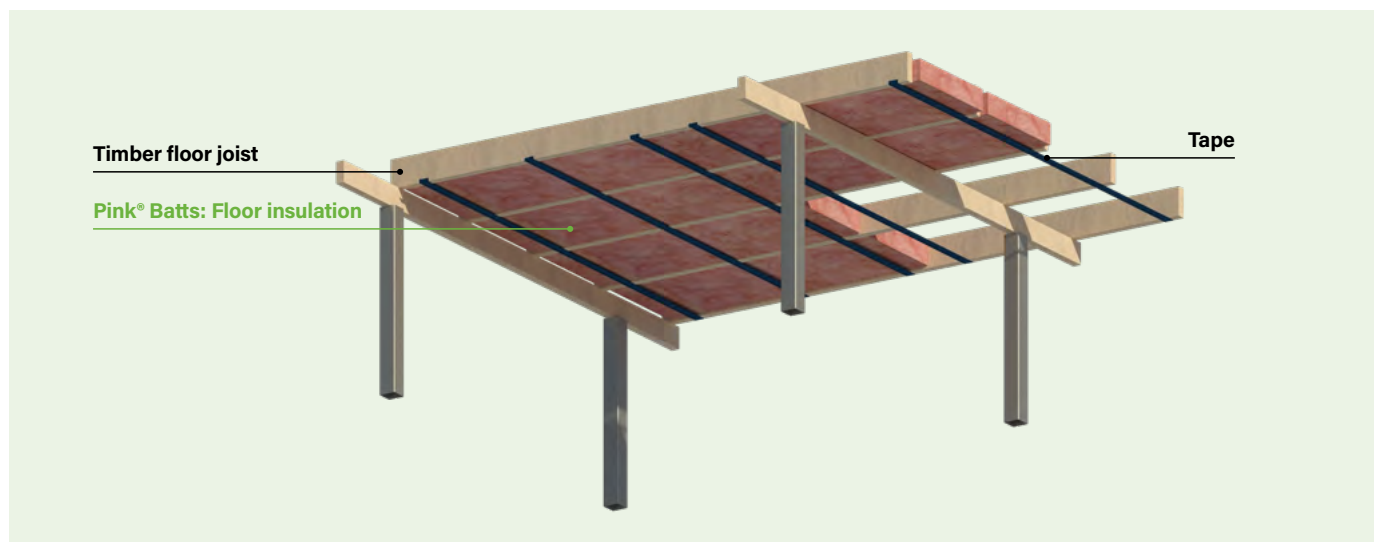
Retrofit floor

Fitting Pink® Floor Batts under floors when flooring is already fitted

- Start by placing batt packs at even intervals under the floor in the area furthest away from the sub-floor entrance.
 - Commence working from one side, opening the pack in the furthest point from the access entrance.
 - Insert batts between floor joists pushing them upward, hard against floor boards/underfloor. The batts will friction-fit into the space.
 - Butt the batts closely to the frame and together ensuring there are no gaps.
 - Continue to work until floor is fully insulated and extends no less than 50mm beyond the interior face external wall.
 - Cut batts to fill gaps or fit around any pipe work.
 - Offcuts may be used to fill small spaces to ensure complete coverage. Use single offcuts rather than multiple small pieces to fill voids.
- Secure the tape/string (3–4 straps per full length batt) to the underside of joists with staples or fasteners. Run the tape at regular intervals to keep batts securely in place.

Note: If your application/installation is outside these guidelines, please contact Fletcher Insulation prior to commencing the install to obtain written approval for your specific application.

Retrofit application, view from beneath



© Fletcher Insulation Pty Limited 2024. Fletcher Insulation reserves the right to change product specifications without prior notification. Information in this publication and otherwise supplied to users as to the subject product is based on our general experience and is given in good faith, but because of the many particular factors which are outside our knowledge and control and affect the use of products, no warranty is given or is to be implied with respect to either such information or the product itself, in particular the suitability of the product for any particular purpose. The purchaser should independently determine the suitability of the product for the intended application. The colour PINK, Pink® and Pink® Batts are registered trademarks of Owens Corning used under licence by Fletcher Insulation. FBS-1 Glasswool Bio-Soluble Insulation® is a registered trademark of ICANZ. Unless otherwise stated all ™ and ® are trademarks and registered trademarks of Fletcher Insulation Pty Limited ABN 72 001 175 355. IG9_Revision_3_Issue Date 10042024.