

Perimeter Batt Install Guide

Application

This installation guide provides installation recommendations for Pink® Perimeter Batt, supplied in batt form in residential ceiling applications for both new build and retrofit applications.

Important Notes

- All insulation shall be installed in accordance with AS 3999 & AS 4200.2.
- Refer to the latest ICANZ installation handbook Part 2: Professional Installation Guide for information and tips.
- Ensure that all safety assessments are carried out relevant to the project and all site safety requirements are strictly adhered to.
- Electric cables and equipment partially or completely covered with bulk thermal insulation may overheat and fail. Refer to AS 3999:2015 – Section 2.6 for details.
- Leave a minimum side clearance of 100mm from the body of heat-emitting fixtures such as luminaries, exhaust fans and flues, unless otherwise stated by the manufacturer of the equipment.
- Where cutting is required, use a sharp knife and straight edge. Do not cut insulation with power tools.
- Prior to installation, calculate the amount of insulation and fixings required.
- Pink® insulation products must be installed dry.
- Avoid gaps in the insulation, other than where required, around electrical fittings or as specified.
- Avoid compressing or over fixing insulation. This will reduce the thermal performance of the installed product.
- Avoid using multiple small offcuts to fill single areas. Use larger single pieces, purpose-cut to fill larger gaps.
- Organise to repair damaged plumbing or sewer work before beginning insulation project.
- Turn off the power at the fuse box before commencing the installation. Ensure you place a warning tag to prevent power being restored prior to completion of the install.

Insulation required

- Measure the square metre of area to be insulated.
- Coverage of each Perimeter Batt pack is provided on the relevant Technical Data Sheet.
- Divide the area to be insulated by the coverage per pack to determine the number of packs to order.
- Allow for wastage. As a general rule, allow for 5% wastage for simple areas and greater allowances for more complex areas.

Tools



Sharp knife

With a plastic (non-conductive) handle for cutting insulation to size.



Cutting board

Or hard, durable surface.



Staple gun

With non-metallic staples to staple stringing if needed.



Ladder

Or scaffolding as needed.



Tape measure

To measure lengths required.

PPE

Personal Protective Equipment (PPE) must be compliant with the requirements of the specific worksite. Check with site foreman or site representative to ensure that required PPE obligations are met.

As a recommendation for handling and installing insulation, the following PPE is recommended:



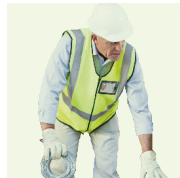
Eye protection

Suitable eye protection to AS 1336 reduces the risk of eye contact with dust or fibres. Safety glasses must be worn when installing from beneath the ceiling.



Gloves

Gloves are recommended, especially when cutting insulation.



Work clothes

Loose fitting clothes, including long pants, long sleeved shirts, cap and gloves should be worn. Long sleeves recommended.



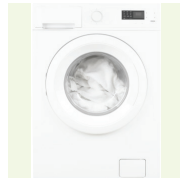
Dust mask

A dust mask is recommended when working in dusty areas.



Safety shoes

Safety boots/shoes must be worn to protect feet.



Separate wash

Wash your clothes separately and rinse the washing machine after use.

Safety



Assess

Assess the building structure and site for any safety issues prior to commencing work.



Check

Before entering a ceiling space, make note of the location of equipment in the ceiling such as lighting luminaires, exhaust fans and fire sprinklers.



Electrical wires

Ensure the work area is safe from hazards including electrical cabling. Working near live electrical wiring is extremely dangerous; use caution to avoid touching any live electrical cables.



Isolate power

If accredited, isolate power at the circuit board where necessary and apply caution tags to circuit breakers.



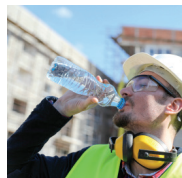
Electrician

If not accredited, ask appropriate site representative to isolate power at the circuit board where necessary and apply caution tags to circuit breakers.



Height

When installing insulation, working at height can be dangerous; exercise caution when climbing ladders or accessing elevated platforms.



Stay hydrated

Ceiling spaces can be hot and poorly ventilated; get relief and fresh air regularly and stay hydrated.

Perimeter Batt install instructions

Note: The install guide below is meant to be used on conjunction with the Installation Guide – Pink Batts – Wall and Ceiling and should be carried out by suitably trained personnel. This step by step guide is not relevant to all type of roofing and is, in general applicable to pitched timber roofing where being installed from the underside. For top down installations or retrofit installations this guide is not suitable. Contact Fletcher insulation or consult the ICANZ insulation handbook for further guidance.

Pitched Timber Roof: New Build

Fitting perimeter batts to the ceiling before the external eaves are installed

- Perimeter batts are installed along the edge of the ceiling at the eaves, perpendicular to the ceiling batts (Fig. 1)

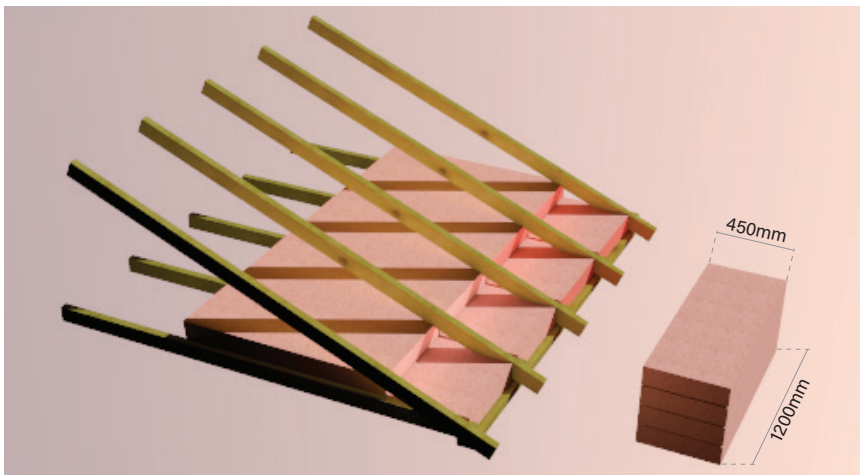


Figure 1

- The perimeter batt is meant to be split in two and fit between the joists and above the top plate of the external wall.
- The Perimeter batt is meant to use its 450mm width as an aid to the installer and speed up installations (Fig. 2).

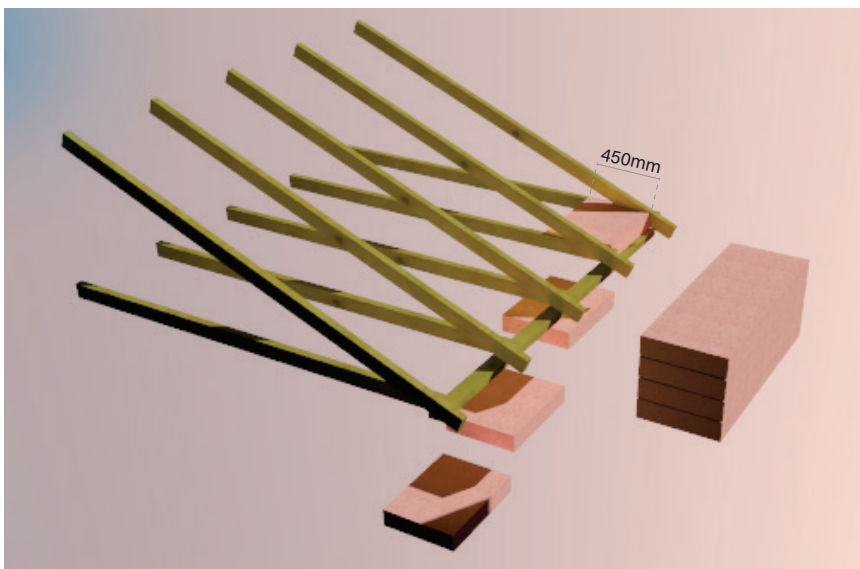


Figure 2

- Take note that the perimeter batt must sit a minimum of 50mm on top of the top plate (Fig. 3).

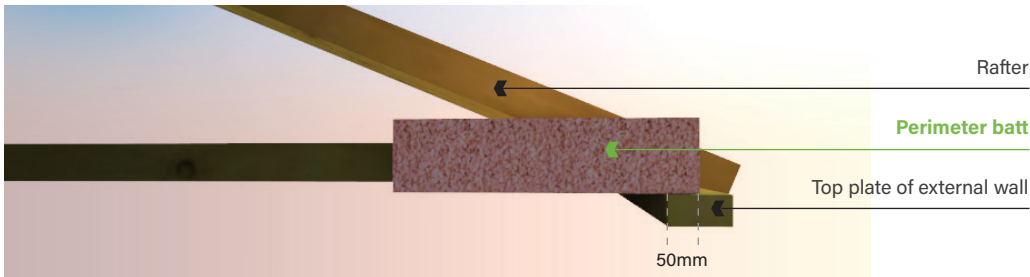


Figure 3

- Note the friction fit of $\pm 10\text{mm}$ each side of the Perimeter batts, this is to help support the batt while the rest of the insulation is installed.
- Once all the Perimeter batts are in place the bulk ceiling insulation can be installed (Fig. 4).

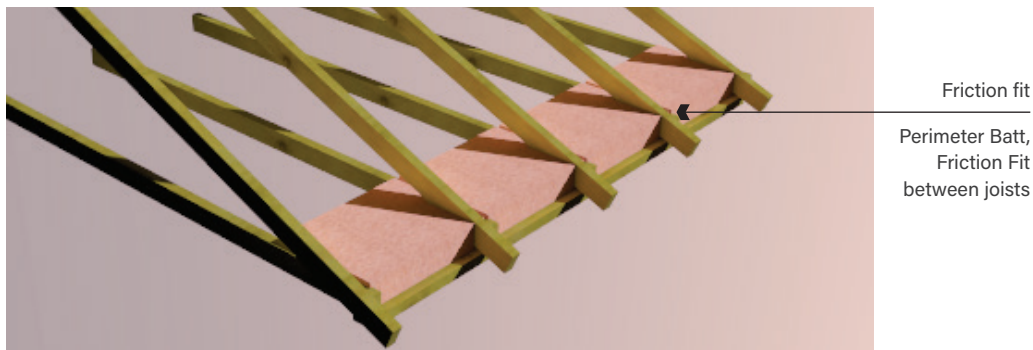


Figure 4

- Install the ceiling insulation in from the underneath being sure to have it abut the Perimeter batt snugly and also ensuring a 20mm gap underneath the sarking or roof sheet (Fig. 5 & Fig. 6).
- The gap is to ensure condensation management and is required by section 10.8.3 of NCC 2022 vol 2.

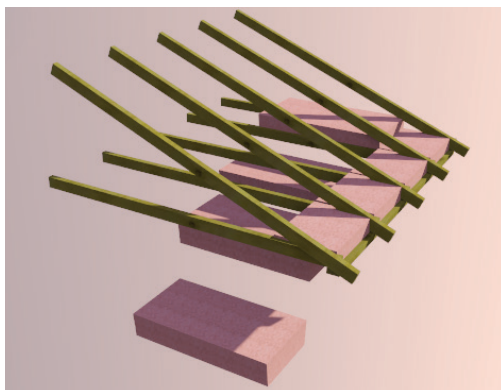


Figure 5

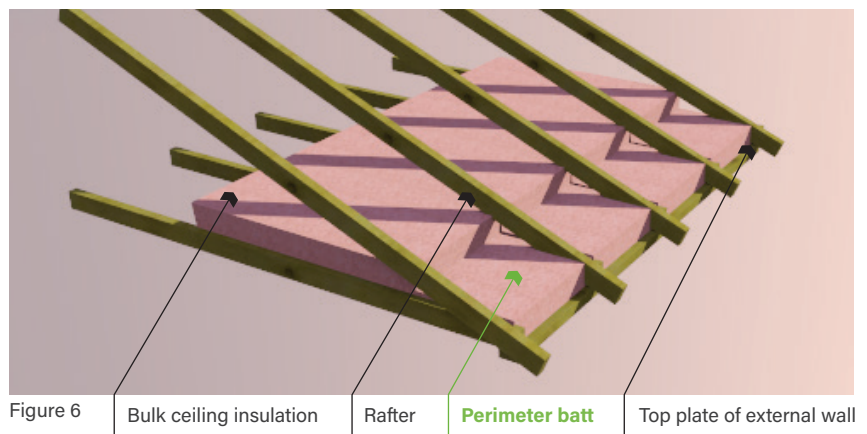


Figure 6

Retrofitting Perimeter Batt to the ceiling

- Perimeter Batts can be retrofitted from the roof space, at the edges of the ceiling batts, using a non-conductive insulation poker stick to ensure there are no gaps.
- Follow the same guidelines as provided for installation when external eaves are not in place

© Fletcher Insulation Pty Limited 2024. Fletcher Insulation reserves the right to change product specifications without prior notification. Information in this publication and otherwise supplied to users as to the subject product is based on our general experience and is given in good faith, but because of the many particular factors which are outside our knowledge and control and affect the use of products, no warranty is given or is to be implied with respect to either such information or the product itself, in particular the suitability of the product for any particular purpose. The purchaser should independently determine the suitability of the product for the intended application. The colour PINK, Pink® and Pink® Batts are registered trademarks of Owens Corning used under licence by Fletcher Insulation. FBS-1 Glasswool Bio-Soluble Insulation® is a registered trademark of ICANZ. Unless otherwise stated all ™ and ® are trademarks and registered trademarks of Fletcher Insulation Pty Limited ABN 72 001 175 355. RTDS25_Revision_0_Issue date 01092024.